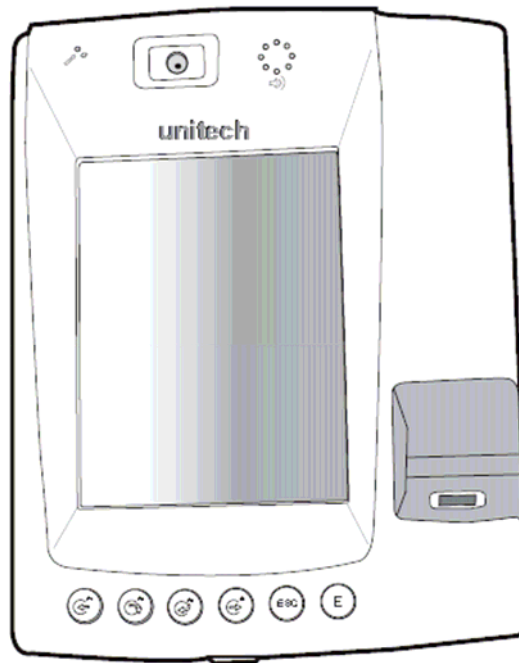


MT650 Video TAS Terminal

MT650



**Quick Reference Guide**

Version 0.1

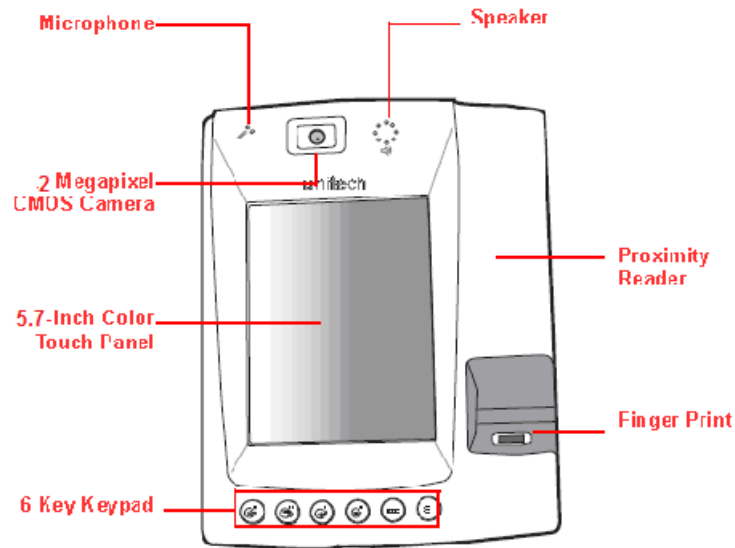
**unitech**

**TASHI**

---

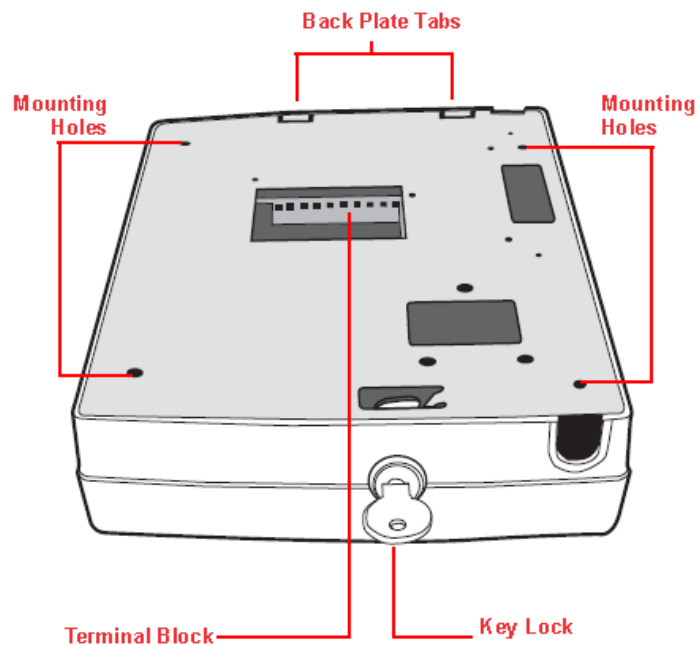
## Tour of the MT650

The following sections describe the main components and features of the MT650.



MT650 Proximity + Finger Print Model

## Rear



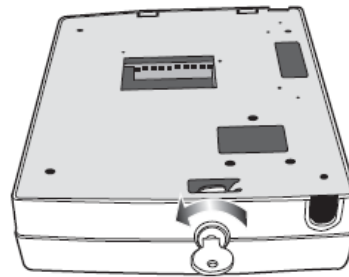
## Setting up the MT650

This section explains how to charge the battery and how to turn on the MT650 for the first time.

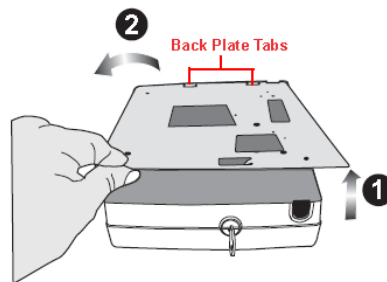
### Opening the Back-plate

Follow these instructions to open the back-plate for accessing the MT650's internal components.

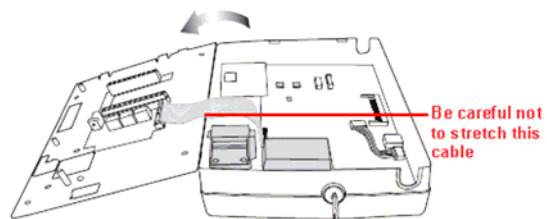
1. Insert the key provided into the security lock and then turn the key counterclockwise.



2. Lift the back-plate up to a 45-degree angle (1) and pull the plate in the direction of the arrow slightly to free the cover from the back plate tabs (2).



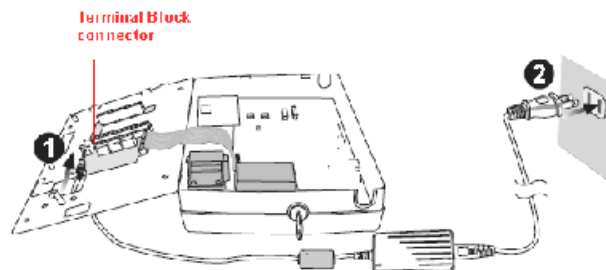
3. Flip the back plate over to the left.



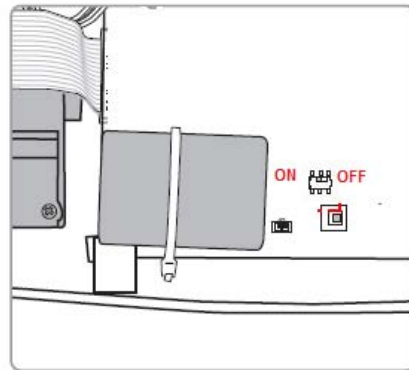
### Connecting Power

Follow these instructions to connect power to the MT650.

1. Plug the 12V DC connector into the terminal block (1)



2. Plug the adapter into a power socket (2).
3. Switch on the battery switch to charge the battery.



## Charging the Battery

Before using the MT650 for the first time, you need to charge it for about 22 hours. The battery begins charging as soon as you connect the power cable.

## Turning ON the MT650 for the First Time

After you have initially charged your device for about 22 hours, the device is ready to be used. You can now start up your device where you'll calibrate the display, and set up the system time zone, date and time.

## Powering On








The MT650 automatically starts when the 12V DC power adapter is plugged-in. The MT650 welcome screen appears followed by the Windows CE screen.

## Using the Keypad

The MT650 is featured with six functional buttons.

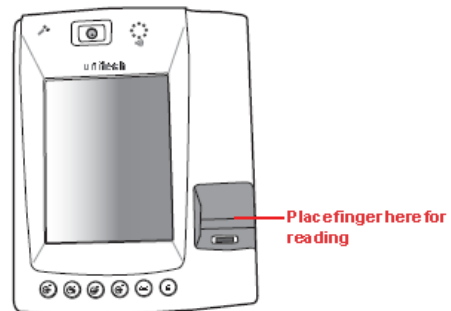


The following table describes the keys.

Key	Main Function
	Clock-in [F1]: Function Key
	Break-out [F2]: Function Key
	Break-in [F3]: Function Key
	Clock-out [F4]: Function Key
	[ESC] Performs the same function as tapping the  button on the touch screen.
	[ENTER] Enters a carriage return or executes a command.

## Using the Finger Print Reader

The MT650 has an optional integrated Finger Print reader that has a verification of less than 2 seconds. The Finger Print Reader comes with 4000 templates.

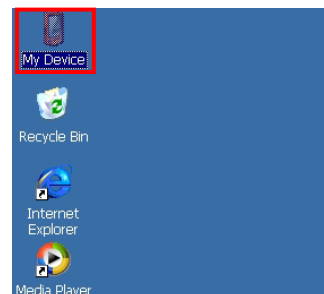


## Testing Finger Print Verification

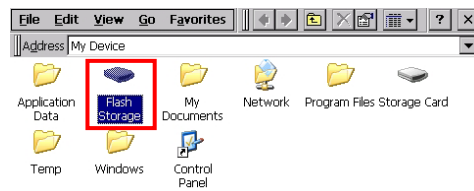
The MT650 has a built-in BIO ID Manager programs that enable the user to test finger print verification. To test finger print verification:

### For UPEC

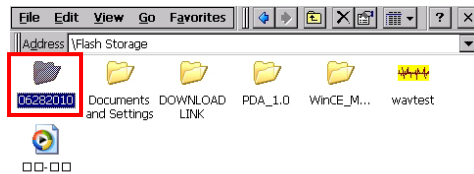
1. Double-tap the My Device icon on the Windows CE desktop.



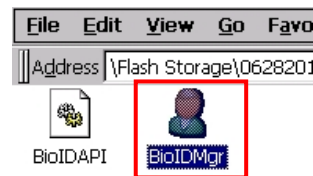
2. Double-tap the Flash Storage.



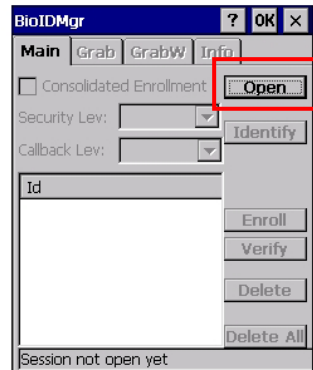
3. Double-tap the "06282010" folder.



4. Double-tap BioIDMgr to open the program.



5. Tap Open to activate the program.

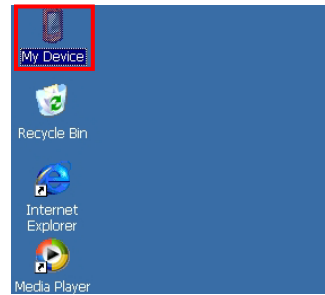


6. You will see the program running.



## For Suprema

1. Double-tap the My Device icon on the Windows CE desktop.



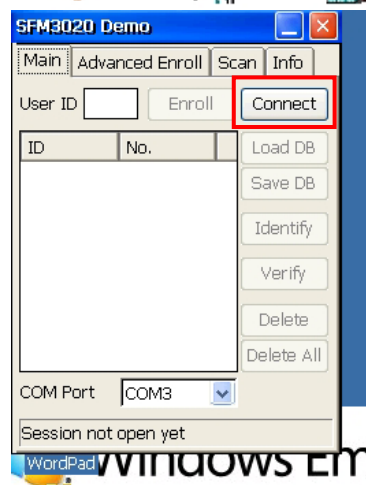
2. Double-tap the Windows folder.



3. Double-tap SFM3020\_Demo to open the program.

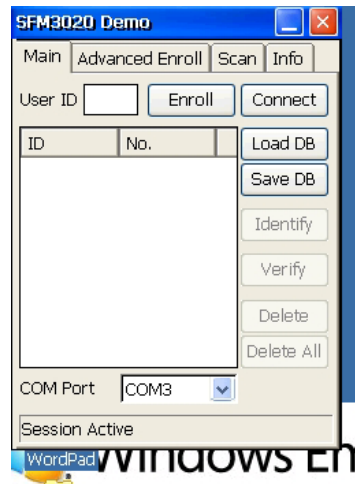


4. Tap Connect to activate the program.



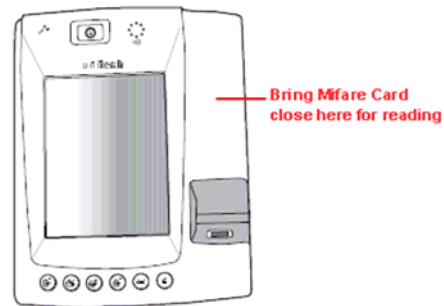


5. You will see the program running.



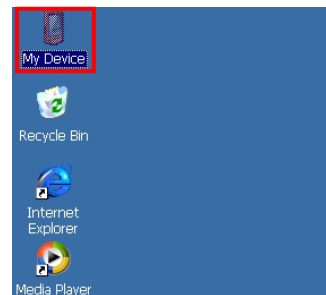
## Using the Mifare Reader (for Suprema)

The MT650 has an optional integrated Mifare reader that has verification in a few seconds.

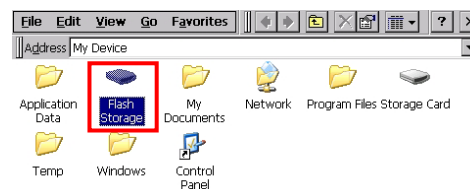


## Testing Mifare Card Verification

1. Double-tap the My Device icon on the Windows CE desktop.



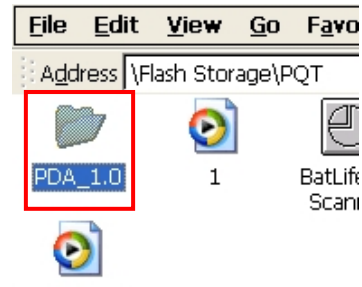
2. Double-tap the Flash Storage.



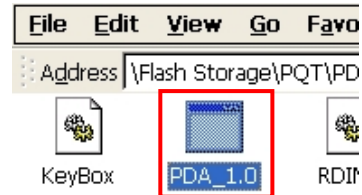
- Double-tap the "PQT" folder.



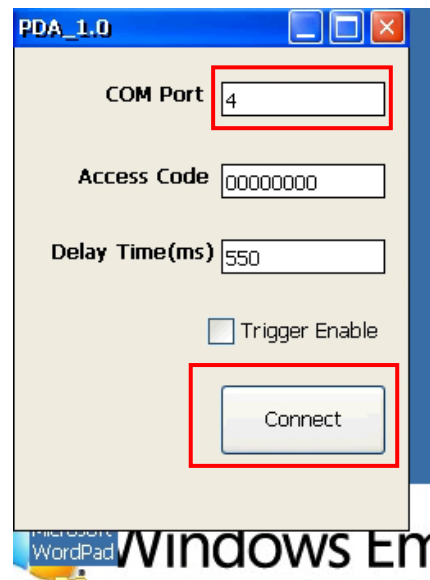
- Double-tap the "PDA\_1.0" folder.



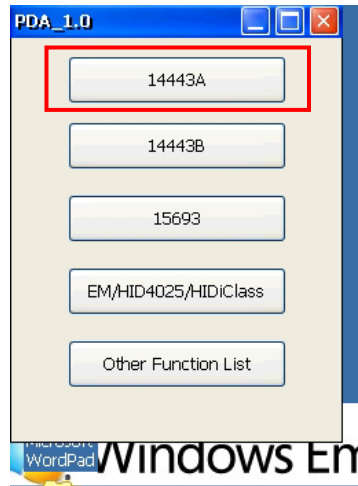
- Double-tap PDA\_1.0 to open the program.



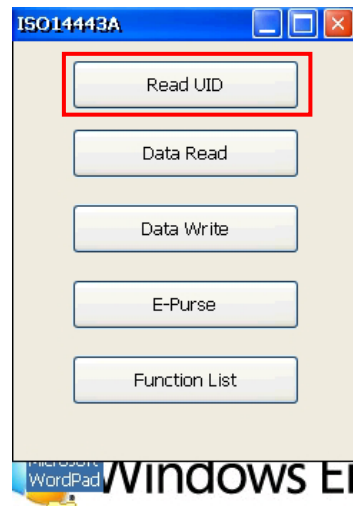
- Input "4" in the column of Com port and then tap Connect.



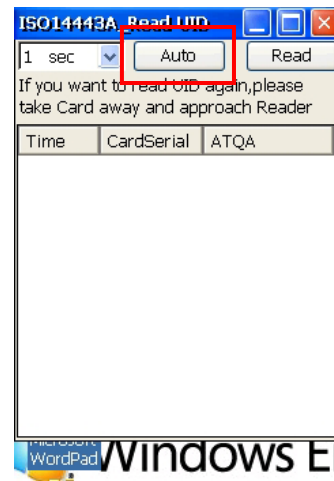
7. For example, tap 14443A.



8. Tap Read UID.



9. Tap Auto and bring the Mifare Card close to the sensor. The code will be read and displayed on the following field.



10. You will see the program running.  
Tap Stop Read to end reading.

