

Changing your PT630 JobGen Application to an HT630 Application

Your original Unitech PT630 JobGen application will run on the new Unitech HT630 mobile computer, but minor modifications will have to be made to your custom application. JobGen will have to launch the Job Engine specifically made for the HT630. Following the steps below will build the job designed previously for the PT630 to the HT630, and transfer the correct Job Engine for the HT630.

Instructions:

Open your job (in this case Job1.jgp). On the left hand side of the job, there is a setting to define the portable model. At default this is “PT630”. Double-Click on this setting.

The screenshot shows the JobGen Plus software interface. The title bar reads "JobGen Plus - [C:\JGPlus5\Samples\PT630\Job1.jgp]". The menu bar includes File, Edit, Nodes, View, Build, Tools, Window, and Help. The left sidebar shows a tree view of the job structure, with "Model: PT-630" circled in red. The main workspace contains a flowchart with a yellow "menu1" node at the top and a cyan "ID" node at the bottom. A vertical arrow points from "ID" up to "menu1", and a horizontal arrow points from "ID" to the left. The flowchart is overlaid on a grid background with instructional text:

It's so easy to create my own job with JobGen Plus/Lite...

Step 1
We like start a job with a menu of selections, so right click on flowchart and select Create Menu node.
• Double click on this menu node to set the properties of the menu and the node:
• Enter menu text in screen-property; set it as the START node in basic properties.

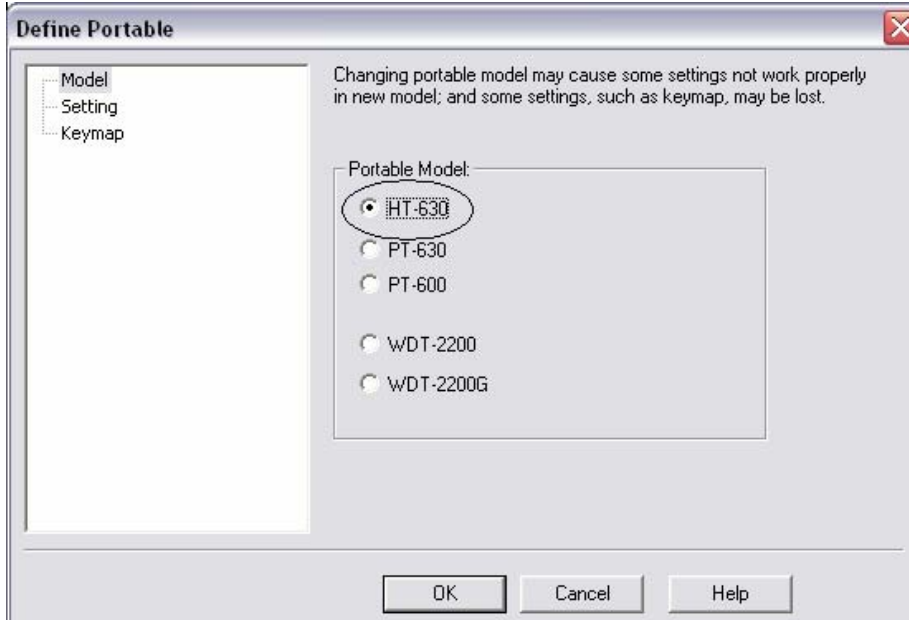
Step 2
Use collect node to get input of data from either scanner or keypad.
Use math node to calculate.
• Change the collect and math node name to the actual data item name:

Step 3
Now it's time to link these nodes together according to the execution logic.
Select link by clicking link icon in toolbar, and point on start node, click then drag drop to the end node.
• Double click on a link to set its properties

Step 4
Press F4 to make job and download to portable, you're ready to run.

At the bottom left, it says "For Help, press F1". At the bottom right, there is a "NUM" button.

Change this setting from **PT630** to **HT630**. Select **OK**



You can now build the job. Select **Build > Make Job** or press **F4**

Questions? Contact Unitech at SupportEngineering@ute.com