

## PT063D-4 Ethernet Cradle Setup

### Software needed:

Network Enabler Administrator v2.6

[http://www.ute.com/files/software/38\\_NetworkEnabler.zip](http://www.ute.com/files/software/38_NetworkEnabler.zip)

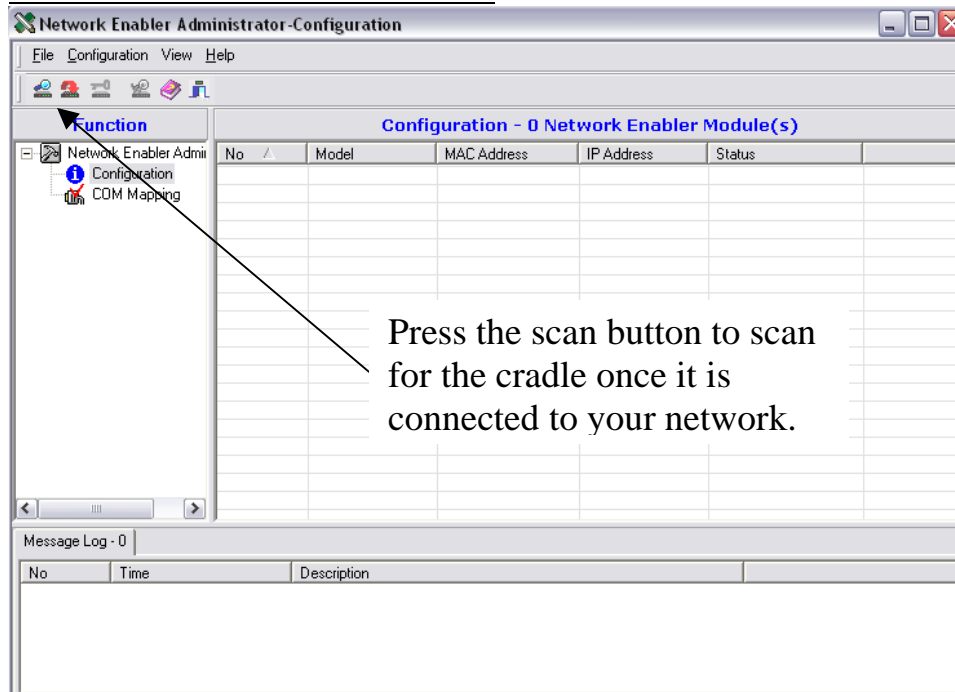
OnlineCom Manager (or OnlineDll.dll)

[http://www.ute.com/files/software/20\\_OnlineCommManagerSetup.exe](http://www.ute.com/files/software/20_OnlineCommManagerSetup.exe)

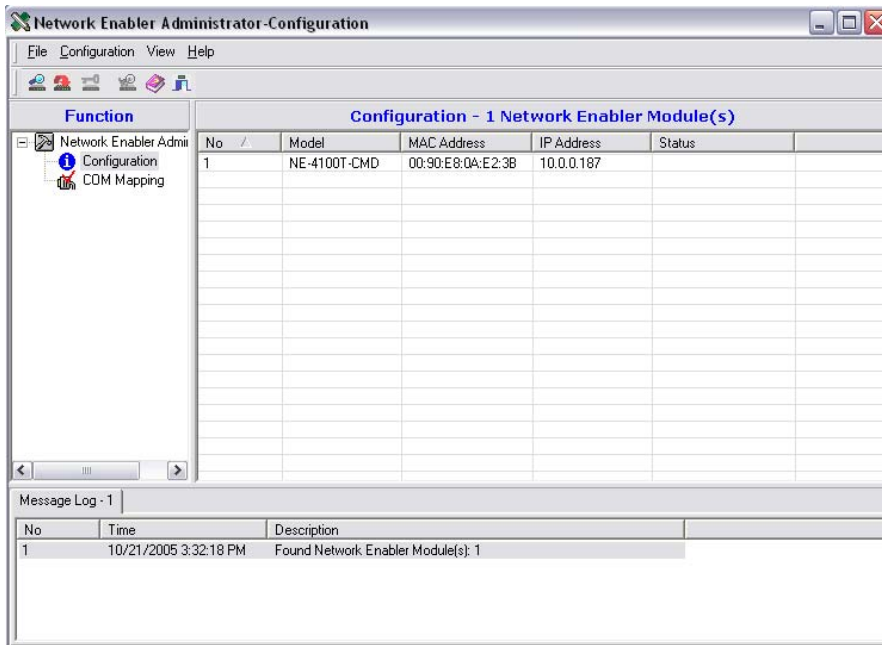
### Connecting the Cradle to your Network:

1. Connect the 9V power adaptor to the cradle
2. Connect an Ethernet cable to either the IN or OUT (not both)
3. Run Network Enabler Administrator

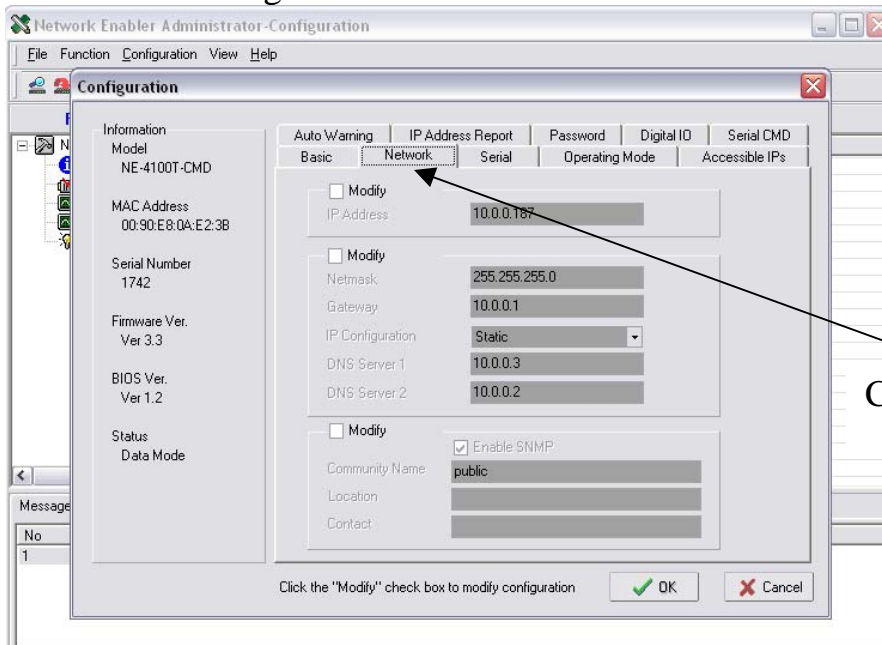
### Network Enabler Administrator:



- a. Press the scan button to scan for the cradle once it is connected to your network

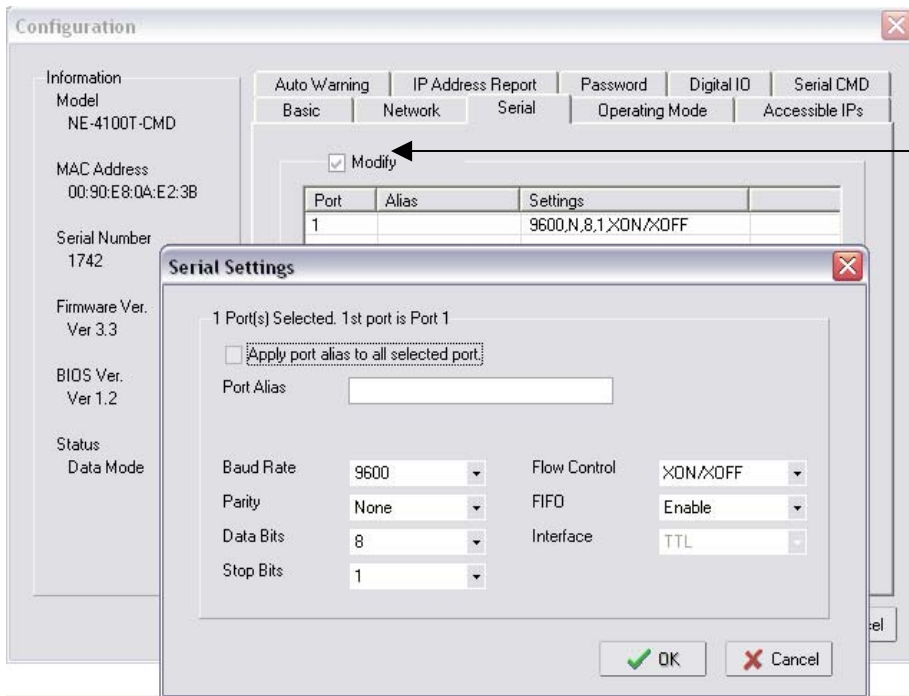


b. The Network Enabler Administrator software should see the cradle and the IP address assigned to it. Double click this IP address for a new window with all the setting.



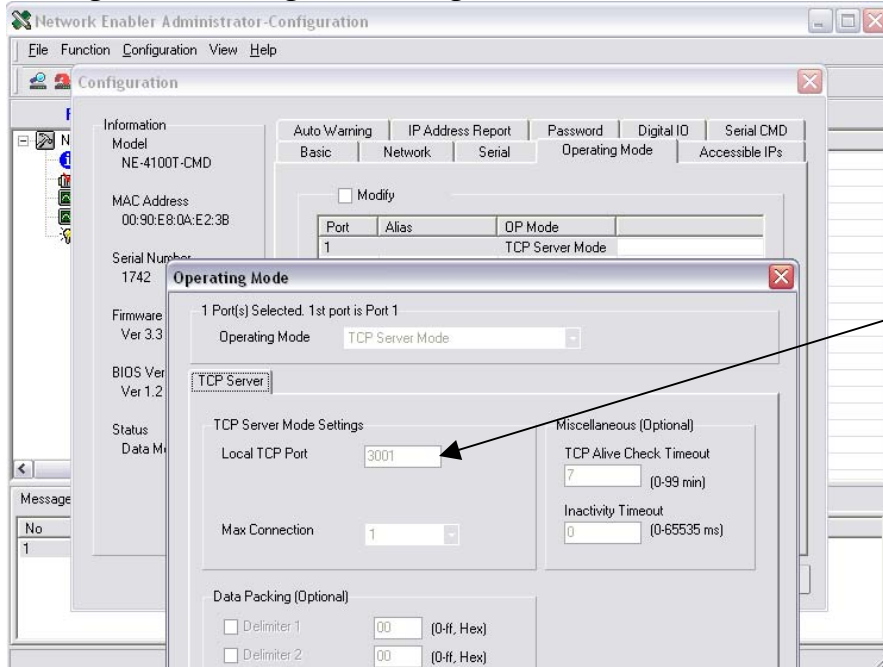
Click the "Network" tab

c. Click on the "Network" tab and modify the IP address to match the IP addresses distributed by your router. In this example, the router distributes 10.0.0.x IP addresses. You can enter the Gateway and a DNS Server 1&2 address.



Check this box and double click the settings that come up.

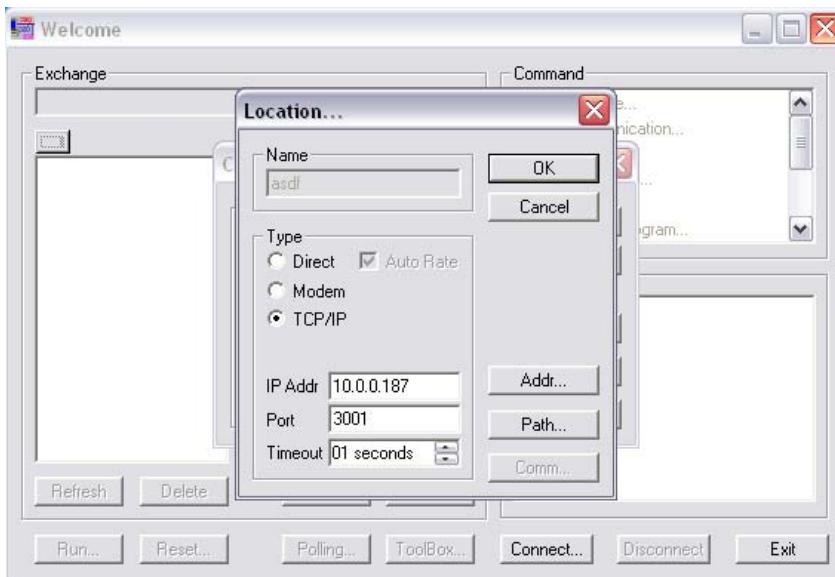
d. Now select the “Serial” tab and check the “Modify” box. Now click on the settings that appear below. A new window will pop up that will allow user to change baud rate, parity, data bits, stop bits and flow control. The settings above are good settings to use.



Make a note of this port

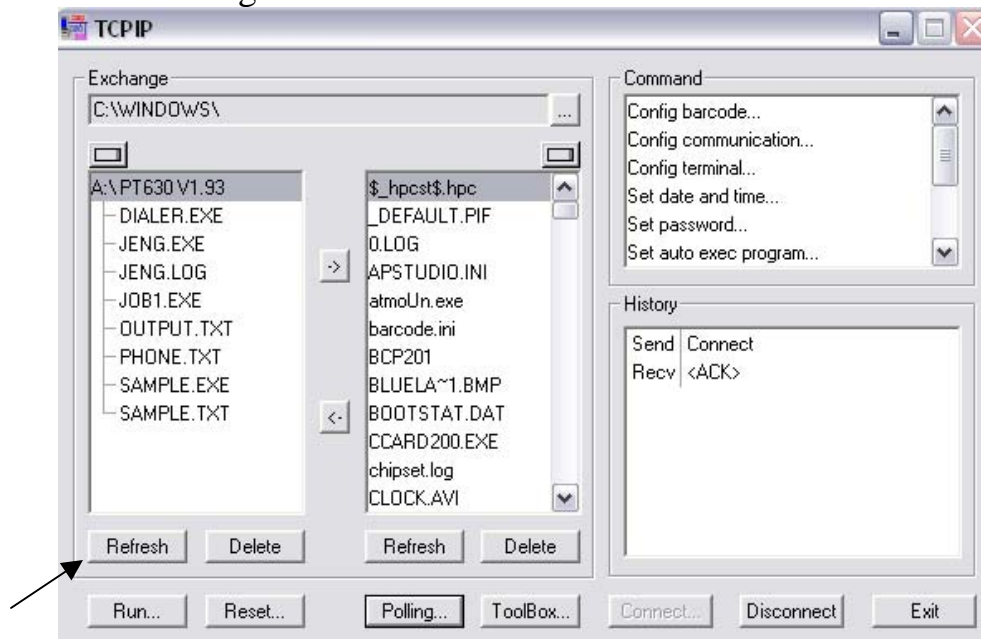
e. Now select the “Operating Mode” tab and check the “Modify” box. Make a note of the port, usually 4001. In this case it was changed to 3001. Once all these steps are completed and updated the user can close the Network Enabler Administrator application.

4. Run OnlineCom Manager or equivalent application that uses the “OnlineDll.dll”



Set the IP address and port to the settings saved by the Network Enabler Administrator application.

Once connected, the OnlineCom Manager application will display the contents of the PT630 on the left side of the screen and the contents of the PC on the right.



Note: If PC contents populate but receive “A:\?” on the left side (portable side), then press “Refresh” under the left text pane.

